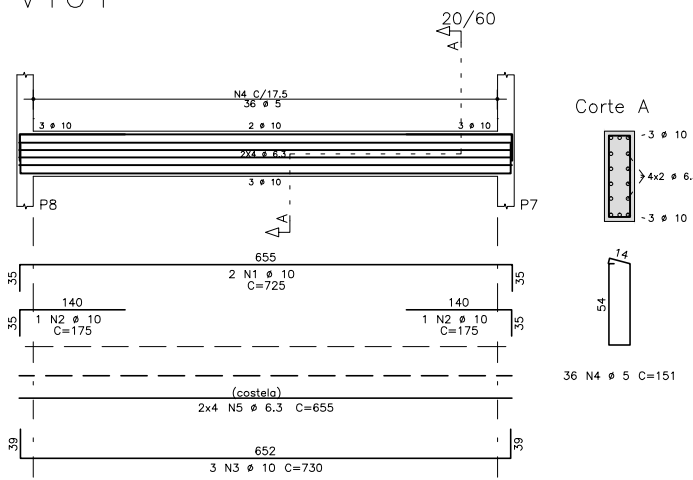
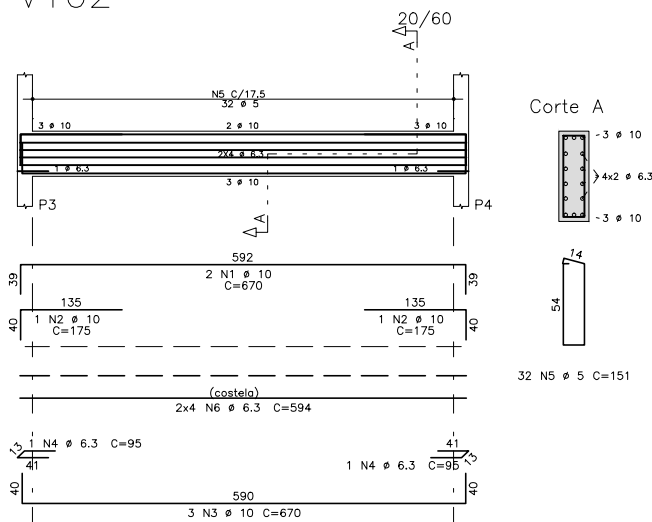


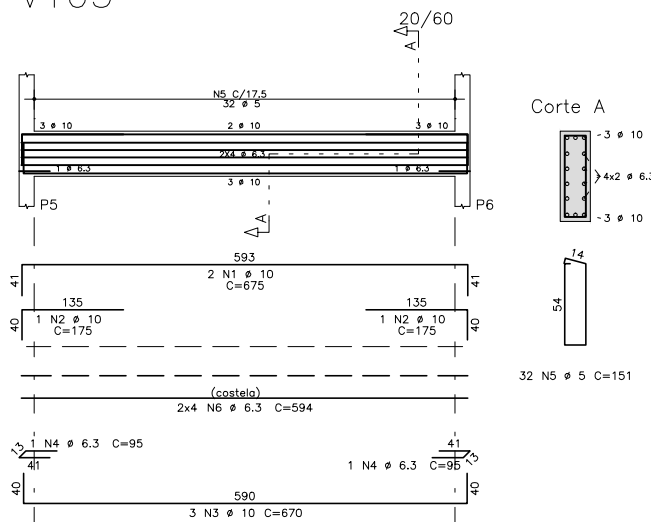
V104



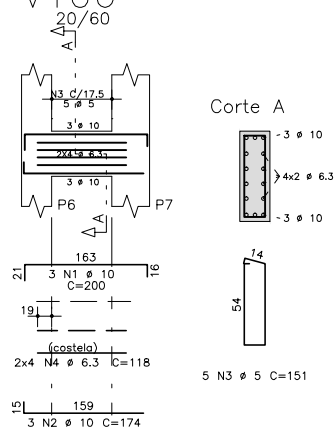
V102



V103



V106

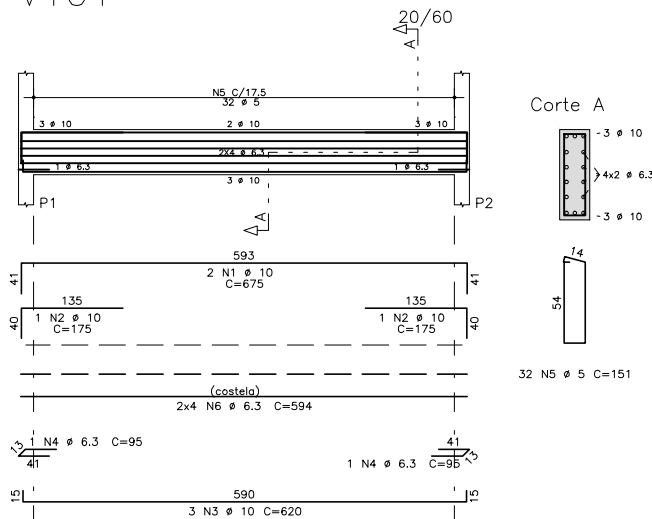


ESTUDO – NÃO EXECUTAR

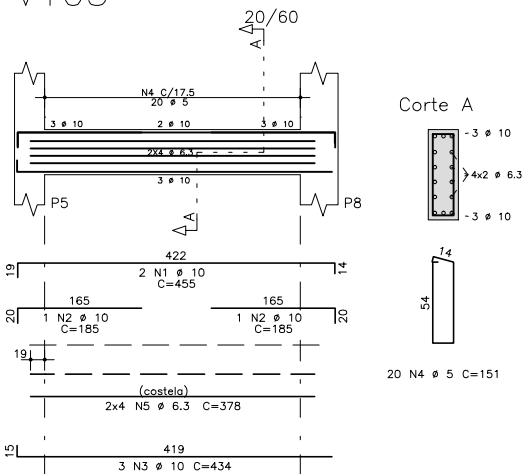
	AÇO	POS	BIT (mm)	QUANT	COMPRIMENTO	
					UNIT (cm)	TOTAL (cm)
V101	50A	1	10	2	675	1350
	50A	2	10	2	175	350
	50A	3	10	3	620	1860
	50A	4	6,3	3	95	190
	60B	5	5	32	151	4832
	50A	6	6,3	8	594	4752
V102	50A	1	10	2	670	1340
	50A	2	10	2	175	350
	50A	3	10	3	670	2010
	50A	4	6,3	2	95	190
	60B	5	5	32	151	4832
	50A	6	6,3	8	594	4752
V103	50A	1	10	2	675	1350
	50A	2	10	2	175	350
	50A	3	10	3	670	2010
	50A	4	6,3	2	95	190
	60B	5	5	32	151	4832
	50A	6	6,3	8	594	4752
V104	50A	1	10	2	725	1450
	50A	2	10	2	175	350
	50A	3	10	3	730	2190
	60B	4	5	36	5436	5436
	50A	5	6,3	8	655	5240
V105	50A	1	10	2	485	970
	50A	2	10	2	185	370
	50A	3	10	3	434	1302
	60B	4	5	20	151	3020
	50A	5	6,3	8	378	3024
V106	50A	1	10	3	200	600
	50A	2	10	3	174	522
	60B	3	5	15	75	75
	50A	4	6,3	8	118	944

RESUMO AÇO CA 50-60			
AÇO	BIT (mm)	COMPR (m)	PESO (kg)
60B	5	237	37
50A	6,3	240	59
50A	10	187	115
Peso Total		60B =	37 kg
Peso Total		50A =	174 kg

V101



V105



fck 250. kg/cm2 – C25		Schuring & Schuring Ltda.	
Schuring & Schuring		Escritorio Técnico B.E.SCHURING – Projetos de Engenharia Av. XV de Novembro, 489 – Porto 2o. Andar – Cuiabá MT Fone:(065) 321 9959 – Fax:(065) 623 5086 – Email – schuring@terra.com.br	
PROJETO:	PROPRIETÁRIO:	PREFEITURA MUNICIPAL VARZEA GRANDE PROJETO ORLA DO PORTO ALAMEDA JULIO MULLER	
PROJETO ESTRUTURAL	RESP. TEC. EXECUCAO:	OBRA: MIRANTE	
		END.: Alameda Julio Muller, s/n Baíro Alameda / Varzea Grande – MT	
	AUTORES DO PROJETO:	ASSUNTO:	
		DET ARM VIGAS	
		PECAS DETALHADAS V101 / V102 / V103 / V104 / V105 / V106	
	Benedito Eliseu Schuring Eng.Civil – CREA 715/D–MT	FCK: 250 DIREITOS AUTORIZADOS RESERVADOS VERIFICAR MEDIDAS NA OBRA	
	Andre Luiz Schuring Eng.Civil – CREA 8697/D–MT	DATA: 27/08/2018	FOLHA No. 06